

job name:

type:

6"/12" na.row™ spec sheet 90CRI direct

material
3.5" dia. smooth extruded aluminum outer housing in four lengths available in 15 standard powder coat paint finishes listed below. premium RAL and wood finishes also available.

LED
COB in 2700K, 3000K, 3500K, or 4000K 90 cri standard rated >36,000 hours L70 (6.8K) per LM-80 test data, and 71,000 hours projected life per IES TM-21.

downlight optics
LEDiL® Angelina 82mm dia 31mm high (RoHS compliant) available in 20° spot, 30° medium, 50° wide with specular anodized finish. 90° extra wide features matte white highly reflective finish. color mixing sublens standard. standard mounting clamp allows for easy replacement of reflector in field. the typical total beam angle is the full angle measured where the luminous intensity is half of the peak volume.

driver
constant current, class P, class 2 power unit, class A sound rating, universal input (120-277V) programmable driver, 5% minimum dimming level, PF >0.90. protections include short circuit, input/output isolation and surge protection (3KV). wired for 0-10v dimming from factory.

mounting standard
driver in junction box (requires 2 1/8" deep electrical box). ultrathin vertical stainless steel cable and field adjustable gripper that allow for exact AFF mounting heights. cloth-covered power cord color options listed below. cloth cord requires special stripping tool (link). 5"dia canopy painted to match fixture. satin black canopy standard on wood finishes.

canopy mounted driver (CDVR) (optional)
5" dia canopy with 3.5" x 3.5" extruded aluminum painted to match fixture (see image below)

remote enclosure (.LV) (optional)
the standard driver can be remote mounted up to 33ft from the LED. suspension length should be considered in distance. remote enclosure supplied. for distances greater than 33ft consult factory. for Chicago Plenum installation consult factory.

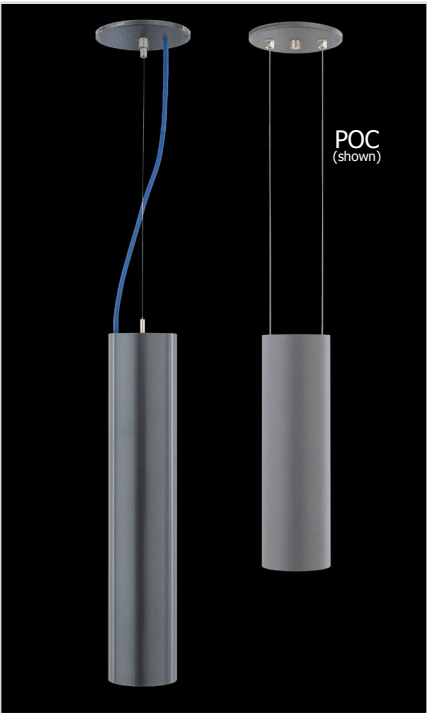
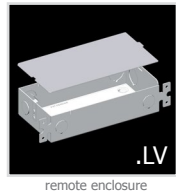
power over cable (POC) (optional)
Class 2 LED powered suspension system that suspends and powers the fixture with thin stainless steel copper-core conductive cables, providing a clean look without the need for a separate power cord. powered suspension requires cable cutter (link) specifically designed to cut stainless steel aircraft cable from 1/32" to 1/8".

finish
select from 15 standard powder coat paint finishes or 3 wood finishes (listed below) or specify RAL# for custom colors.

emergency
if required, recommend use of inverter (by other).

catalog number

| size | beam | CCT | lumens | painting finish | power cord | options |
|--|--------------------------|-----------------|-------------------|------------------------------|---|-----------------------------------|
| P7606 driver in j-box | S 20° spot | 27 2700K | L1 395 lm | AP anodized paint | BUPC blue cloth cord | 3FT 36" cables |
| P7606.LV remote enclosure 3.5"dia X 6 "ht | M 30° med | 30 3000K | L2 695 lm | BS brass | ORPC orange cloth cord | 6FT 72" cables |
| | W 50° wide | 35 3500K | L3 995 lm | BU blue | PLPC purple cloth cord | CDVR canopy mounted driver |
| | XW 90° extra wide | 40 4000K | H1 1390 lm | BZ bronze | RDPC red cloth cord | |
| P7612 driver in j-box | | | H2 1985 lm | CP champagne | WGPC white & gray dot cloth cord | |
| P7612.LV remote enclosure 3.5"dia X 12"ht | | | H3 2780 lm | FB flat black | POC power over cable | |
| | | | | GM gun metal | WHPC white cord | |
| | | | | MB military blue | BKPC black cord | |
| | | | | MW matte white | SBPC silver braid cord | |
| | | | | OR orange | | |
| | | | | RD red | | |
| | | | | SB satin black | | |
| | | | | SS satin silver | | |
| | | | | TG textured gray | | |
| | | | | YO yellow | | |
| | | | | premium finish | | |
| | | | | RAL specify RAL# | | |
| | | | | wood finish | | |
| | | | | ASH ashwood | | |
| | | | | ENG english brown oak | | |
| | | | | ESP espresso | | |



This product meets the guidelines for the Build America, Buy America Act. Some Exclusions Apply. For more information and full list of eligible SKUs, please contact the factory at info@impactltg.com

job name:

type:

18"/24" na.row™ spec sheet 90CRI

direct

material
3.5" dia. smooth extruded aluminum outer housing in four lengths available in 15 standard powder coat paint finishes listed below. premium RAL and wood finishes also available.

LED
COB in 2700K, 3000K, 3500K, or 4000K 90 cri standard rated >36,000 hours L70 (6.8K) per LM-80 test data, and 71,000 hours projected life per IES TM-21.

downlight optics
LEDiL® Angelina 82mm dia 31mm high (RoHS compliant) available in 20° spot, 30° medium, 50° wide with specular anodized finish. 90° extra wide features matte white highly reflective finish. color mixing sublens standard. standard mounting clamp allows for easy replacement of reflector in field. the typical total beam angle is the full angle measured where the luminous intensity is half of the peak volume.

driver
constant current, class P, class 2 power unit, class A sound rating, universal input (120-277V) programmable driver, 5% minimum dimming level, PF >0.90. protections include short circuit, input/output isolation and surge protection (3KV). wired for 0-10v dimming from factory.

mounting standard
driver in junction box (requires 2 1/8" deep electrical box). ultrathin vertical stainless steel cable and field adjustable gripper that allow for exact AFF mounting heights. cloth-covered power cord color options listed below. cloth cord requires special stripping tool (link). 5"dia canopy painted to match fixture. satin black canopy standard on wood finishes.

canopy mounted driver (CDVR) (optional)
5" dia canopy with 3.5" x 3.5" extruded aluminum painted to match fixture (see image below)

remote enclosure (.LV) (optional)
the standard driver can be remote mounted up to 33ft from the LED. suspension length should be considered in distance. remote enclosure supplied. for distances greater than 33ft consult factory. for Chicago Plenum installation consult factory.

power over cable (POC) (optional)
Class 2 LED powered suspension system that suspends and powers the fixture with thin stainless steel copper-core conductive cables, providing a clean look without the need for a separate power cord. powered suspension requires cable cutter (link) specifically designed to cut stainless steel aircraft cable from 1/32" to 1/8".

finish
select from 15 standard powder coat paint finishes or 3 wood finishes (listed below) or specify RAL# for custom colors.

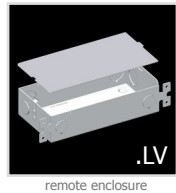
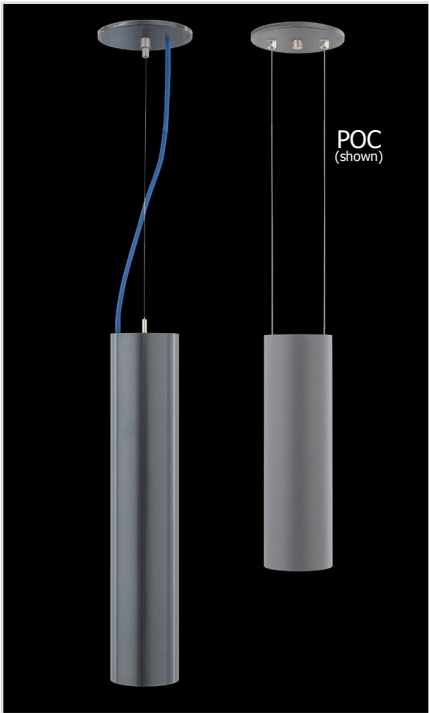
emergency
if required, recommend use of inverter (by other).

catalog number

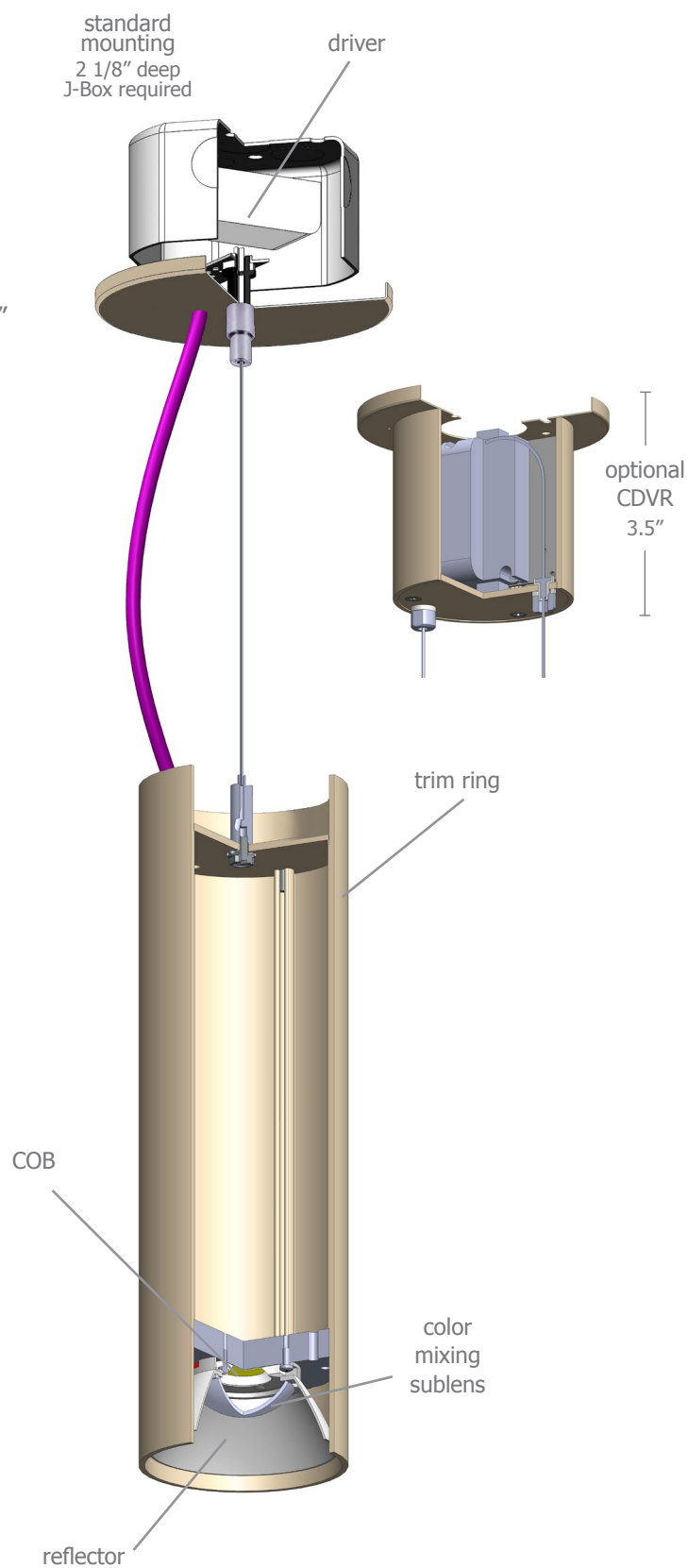
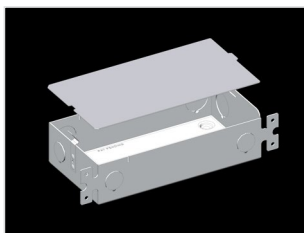
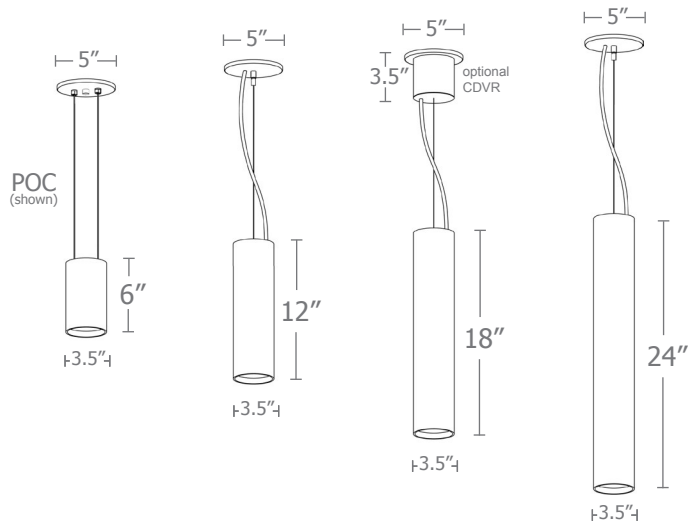
| size | beam | CCT | lumens | painting finish | power cord | options |
|--|--------------------------|-----------------|-------------------|--------------------------|---|-----------------------------------|
| P7618 driver in j-box | S 20° spot | 27 2700K | L1 395 lm | AP anodized paint | BUPC blue cloth cord | 3FT 36" cables |
| P7618.LV remote enclosure 3.5"dia X 18"ht | M 30° med | 30 3000K | L2 695 lm | BS brass | ORPC orange cloth cord | 6FT 72" cables |
| | W 50° wide | 35 3500K | L3 995 lm | BU blue | PLPC purple cloth cord | CDVR canopy mounted driver |
| | XW 90° extra wide | 40 4000K | H1 1390 lm | BZ bronze | RDPC red cloth cord | |
| P7624 driver in j-box | | | H2 1985 lm | CP champagne | WGPC white & gray dot cloth cord | |
| P7624.BABA driver in j-box | | | H3 2780 lm | FB flat black | POC power over cable | |
| P7624.LV remote enclosure 3.5"dia X 24"ht | | | | GM gun metal | WHPC white cord | |
| | | | | MB military blue | BKPC black cord | |
| | | | | MW matte white | SBPC silver braid cord | |
| | | | | OR orange | | |
| | | | | RD red | | |
| | | | | SB satin black | | |
| | | | | SS satin silver | | |
| | | | | TG textured gray | | |
| | | | | YO yellow | | |

premium finish
RAL specify RAL#

wood finish
ASH ashwood
ENG english brown oak
ESP espresso



This product meets the guidelines for the Build America, Buy America Act. Some Exclusions Apply. For more information and full list of eligible SKUs, please contact the factory at info@impactltg.com

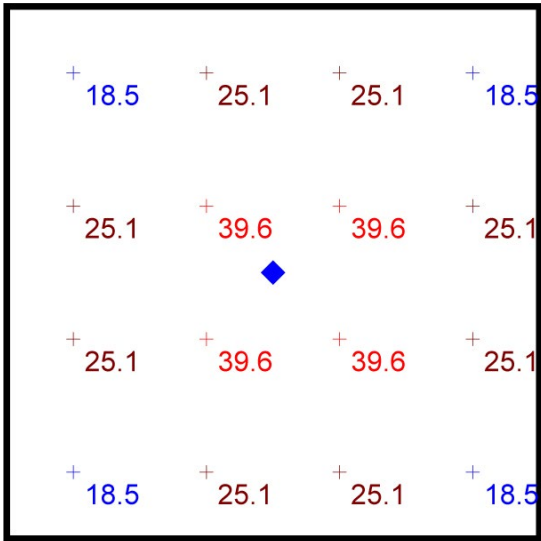




Typical Lighting Layout

| Statistics | | | | | | |
|-------------|--------|---------|---------|---------|---------|---------|
| Description | Symbol | Avg | Max | Min | Max/Min | Avg/Min |
| na.row | + | 27.1 fc | 39.6 fc | 18.5 fc | 2.1:1 | 1.5:1 |

| Schedule | | | | | | |
|----------|----------|-------------------------------|----------------|--------------------------------------|-----------------|---------|
| Symbol | Quantity | Manufacturer | Catalog Number | Description | Lamp | Wattage |
| | 1 | Impact Architectural Lighting | P7612 W 40 H3 | 12" length nar.ow downlight cylinder | 4000k 90cri LED | 28 |



Plan View
Scale - 1" = 2ft

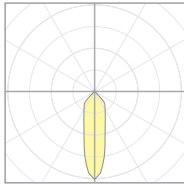
- 8' x 8' x 12'H space
- 80/50/20 reflectances
- bottom of fixture at 10' aff
- FC readings at 2.5' aff
- layout conducted using P7612 with 90 CRI H3 (2780 lm) with wide beam spread



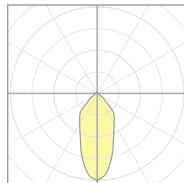
Calculation Table

The application of a Light Loss Factor is required to:

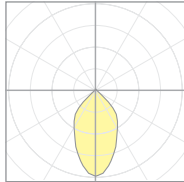
- match the lumen output for the power module specified
- incorporate the increased lumen output due to LED/Driver upgrades



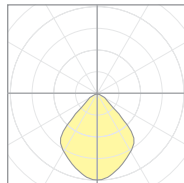
20921
P7506-S-40H3
S 20° spot



20922
P7506-M-40H3
M 30° med



20923
P7506-W-40H3
W 50° wide

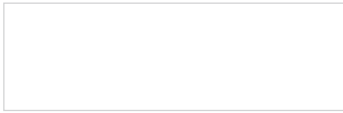


20924
P7506-EW-40H3
xW 90° extra wide

| Cat No | Delivered* Lumens | Watts 120V / 277V | IES File # | LLF to be applied |
|-----------|----------------------|----------------------|---------------------|----------------------|
| L1 | 395 | 4 | 20921 spot | .12 |
| | | | 20922 med | .12 |
| | | | 20923 wide | .12 |
| | | | 20924 x-wide | .12 |
| L2 | 695 | 7 | 20921 spot | .22 |
| | | | 20922 med | .22 |
| | | | 20923 wide | .22 |
| | | | 20924 x-wide | .22 |
| L3 | 995 | 10 | 20921 spot | .31 |
| | | | 20922 med | .31 |
| | | | 20923 wide | .31 |
| | | | 20924 x-wide | .31 |
| H1 | 1390 | 14 | 20921 spot | .43 |
| | | | 20922 med | .43 |
| | | | 20923 wide | .43 |
| | | | 20924 x-wide | .43 |
| H2 | 1985 | 21 | 20921 spot | .62 |
| | | | 20922 med | .62 |
| | | | 20923 wide | .62 |
| | | | 20924 x-wide | .62 |
| H3 | 2780 | 28 | 20921 spot | .86 |
| | | | 20922 med | .88 |
| | | | 20923 wide | .88 |
| | | | 20924 x-wide | .88 |

*delivered lumens based on 4000K, 90+ cri

Powder Coat Paint Finishes



MW matte white



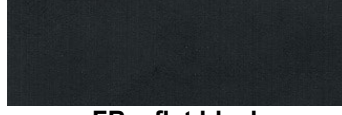
AP anodized paint



SS satin silver



TG textured gray



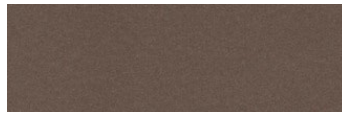
FB flat black



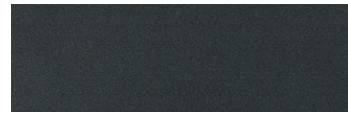
SB satin black



CP champagne



BZ bronze



GM gun metal



OR orange 2011



BU blue 5017



BS brass



RD red 3020



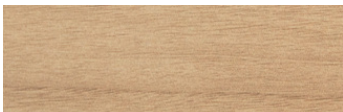
YO yellow 1018



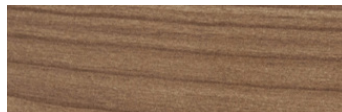
MB military blue

Premium Finishes*

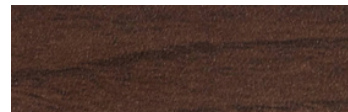
Wood Finishes



ASH ashwood



ENG english brown oak



ESP espresso

For accurate color verification, actual finish samples are available upon request.



RAL#

*Available on select series. Consult product submittal for availability.

